

**TOSB OTOMOTİV YAN SANAYİ O.S.B.**

1. Cadde No: 24/2 41420 Çayırova / KOCAELİ - TÜRKİYE

T: +90 (262) 658 13 40 (5 hat)

F: +90 (262) 658 05 27

info@ersel.com



[www.ersel.com](http://www.ersel.com)



adman dream partner





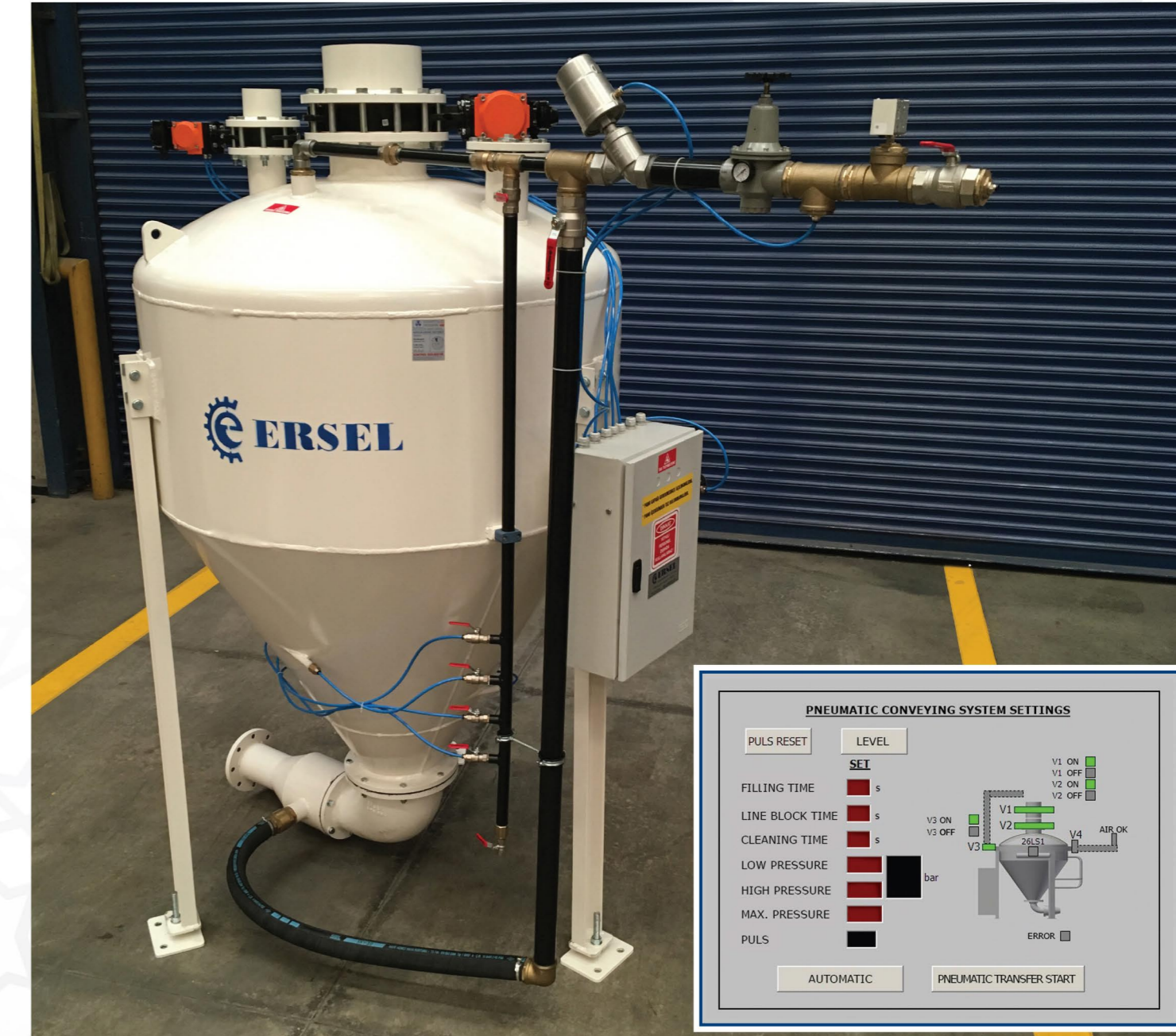
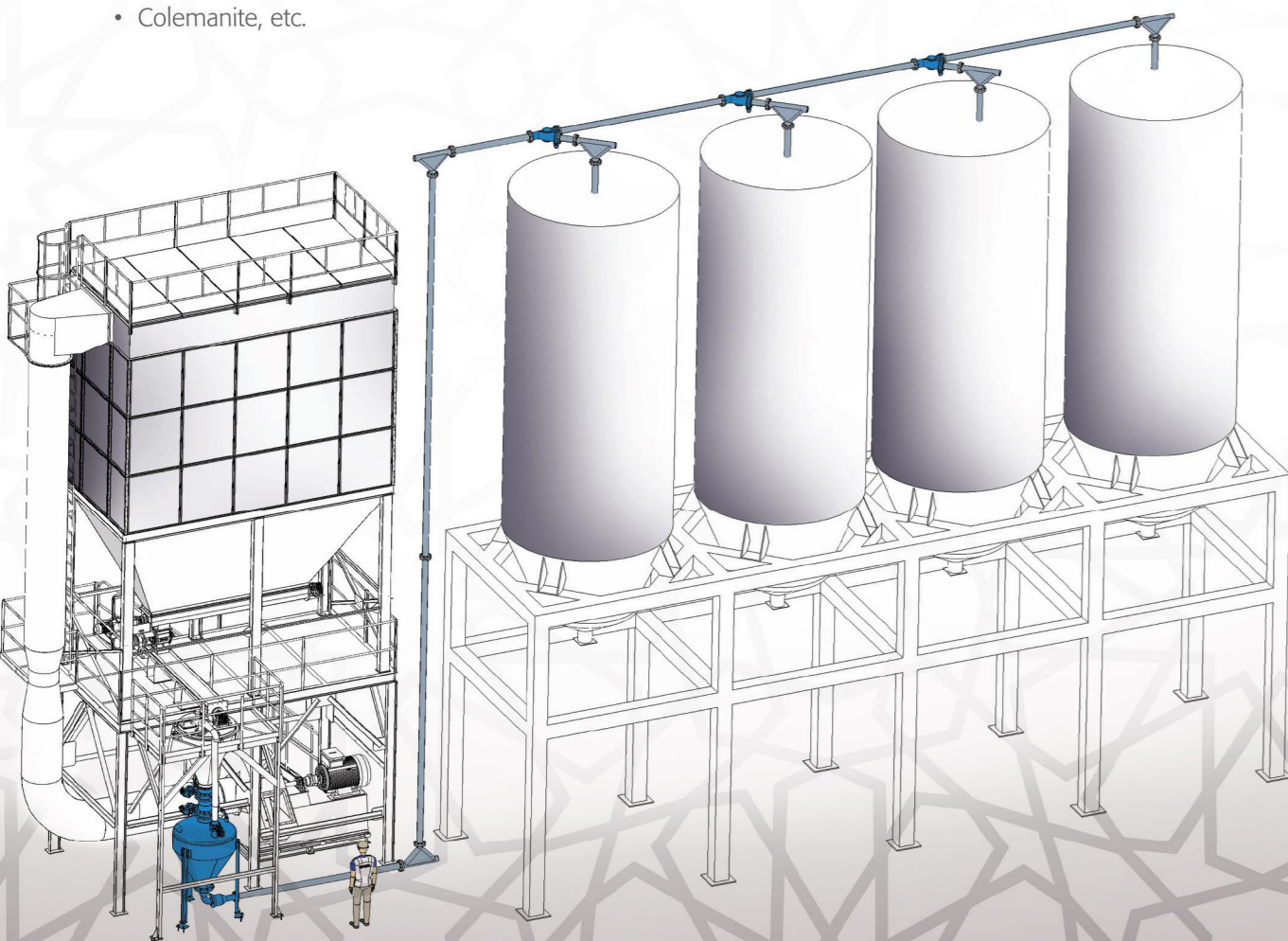
**Pneumatic Conveying Systems**, transfer dry, fine and powder materials, with low speed by using positive air pressure, in a vertical and/or horizontal direction, to a single point or with the help of directional valves to multiple points.

- Low wear rates through low speed conveying
- Avoids air consumption during filling by using level sensors, so energy consumption is minimum
- Dust free conveying
- Since the conveying is made through pipeline, material can be transferred to every required point
- Low space allocation by its compact design
- Due to absence of rotating or moving parts, system does not require frequent maintenance and lower the costs
- Since pneumatic conveying system is totally enclosed, the foreign substances are prevented from being mixed with the transfer material

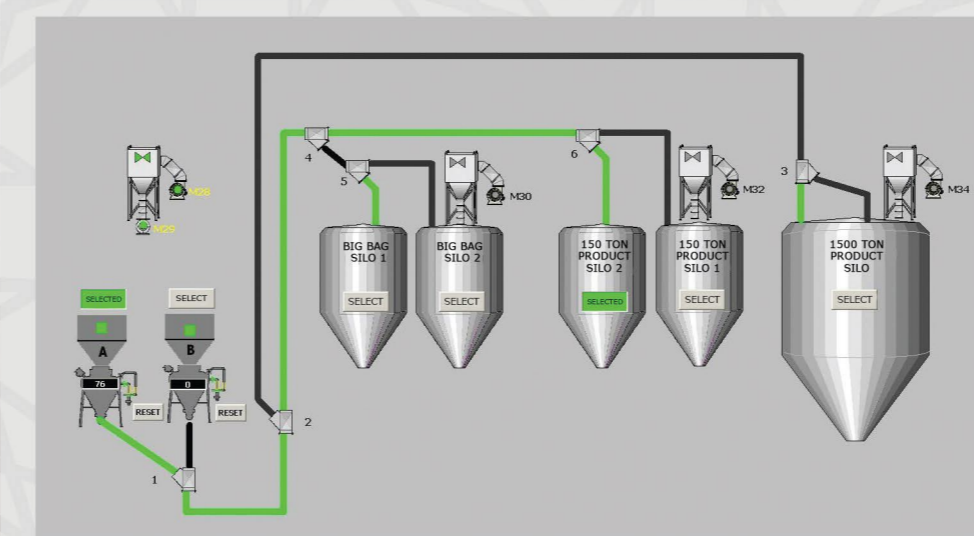
**ERSEL AĞIR MAKİNE A.Ş.**

**Materials Transferred by Pneumatic Conveying Systems;**

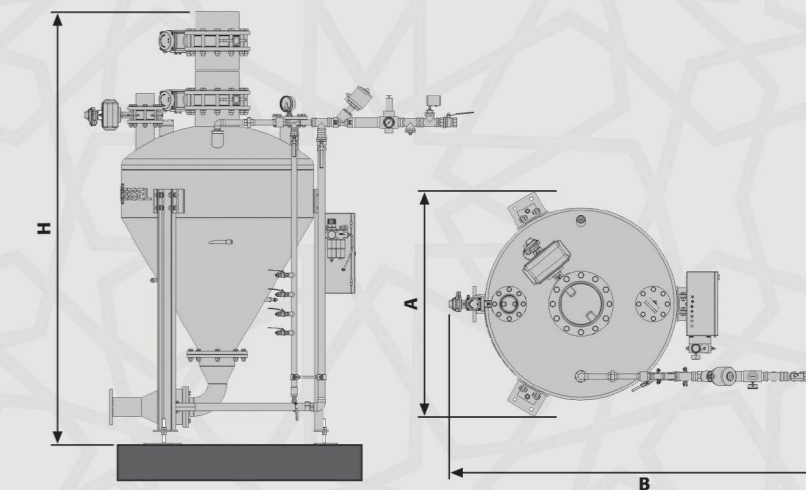
- Cement
- Calcite
- Bentonite
- Coal
- Colemanite, etc.
- Talc
- Barite
- Lime
- Kaolin



**Pneumatic Conveying Systems**



Type	Transfer Capacity t/h	Dimensions (mm)		
		A	B	H
ED 30	1-5	750	2.300	2.200
ED 60	5-10	1.200	2.400	2.600
ED 100	10-20	1.300	2.400	2.800
ED 150	20-30	1.500	2.500	3.000
ED 200	30-50	1.600	2.600	3.400
ED 250	50-70	1.800	2.700	3.600
ED 300	70-100	2.000	2.800	3.800



• Transfer capacity depends on material and distance. Table figures are given upon average values.